

# AIR PREPARATION and CONTROL

**IFS**

## BREATHERS (SILENCER)

### BUTTON SILENCER

- Brass



PART No	BSP
20SB-M05	M5
20SB-02	1/8
20SB-04	1/4
20SB-06	3/8
20SB-08	1/2

### BUTTON SILENCER

- Stainless Steel

(303SS Body, 316SS mesh)



PART No	BSP
20SB-02SS	1/8
20SB-04SS	1/4
20SB-06SS	3/8
20SB-08SS	1/2

### CONICAL SILENCER

- Brass



PART No	BSP
20SC-02	1/8
20SC-04	1/4
20SC-06	3/8
20SC-08	1/2

### CONICAL SILENCER

- Stainless Steel

(303SS Body, 316SS mesh)



PART No	BSP
20SC-02SS	1/8
20SC-04SS	1/4
20SC-06SS	3/8
20SC-08SS	1/2

### CONICAL SILENCER SQUARE HEAD



PART No	BSP
20SCSH-02	1/8
20SCSH-04	1/4
20SCSH-06	3/8
20SCSH-08	1/2
20SCSH-12	3/4

## POLYETHYLENE BODY



PART No	BSP
20SPE-02	1/8
20SPE-04	1/4
20SPE-06	3/8
20SPE-08	1/2

## FLOW CONTROL SILENCER



PART No	BSP
20FCS02	1/8
20FCS04	1/4

## PNEUMATIC SLIDE VALVE



-Slide the sleeve down to allow passage of air.  
-Slide the sleeve up to shut off supply and purge downstream.

PART No	DESCRIPTION
20SV02	1/8" Slide Valve
20SV04	1/4" Slide Valve
20SV06	3/8" Slide Valve
20SV08	1/2" Slide Valve
20SV12	3/4" Slide Valve

## LEGRIS FEMALE CROSS MANIFOLD

Anodised Aluminium with Mounting Holes



PART No	PORT
L3312 00 10	1/8
L3312 00 13	1/4
L3312 00 17	3/8
L3312 00 21	1/2

## 3-WAY SPEADER



PART No	IN	OUT
20SPR04	1/4	3 x 1/4

## MANIFOLDS

Available in 2-Port, 3-Port, 4-Port and 5-Port.  
Outlet and Inlet 1/4bsp.  
Blue Anodised Aluminium  
Working Pressure: 220psi



PART No	PORT
20MAN02	2
20MAN03	3
20MAN04	4
20MAN05	5

## LEGRIS MANIFOLDS

Anodised Aluminium with Mounting Holes  
Pressure Rating: 20Bar



PART No	IN	OUT
L3311 10 13 04	2 x 1/4	4 x 1/8
L3311 10 13 06	2 x 1/4	6 x 1/8
L3311 13 17 04	2 x 3/8	4 x 1/4
L3311 13 17 06	2 x 3/8	6 x 1/4

## DOUBLE SIDED MANIFOLDS

PART No	IN	OUT
L3313 10 13 04	2 x 1/4	4 x 1/8
L3313 13 17 02	2 x 3/8	4 x 1/4
L3313 13 17 03	2 x 3/8	6 x 1/4

## MANIFOLDS WITH MOUNTING HOLES

1/4" Outlets, 1/2" Inlets  
Anodised Aluminium  
Working Pressure: 220psi



PART No	PORT
20MMAN02	2
20MMAN03	3
20MMAN04	4
20MMAN05	5

## 1/2 BRASS MANIFOLD

3/4 Male Inlet, 4 x 1/2" Female Outlets  
Nickel Plated Brass



PART No	DESCRIPTION
20MAN-1208MF	4 x 1/2 Outlets

# AIR PREPARATION and CONTROL

**IFS**

## LEGRIS FLOW CONTROLS



**90° FLOW  
CONTROLLER**



**IN-LINE FLOW  
CONTROLLER**

PART No	DESCRIPTION
<b>BI-DIRECTIONAL</b>	
20FC-0602	6mm x 1/8 90°
20FC-0604	6mm x 1/4 90°
20FC-0802	8mm x 1/8 90°
20FC-0804	8mm x 1/4 90°
<b>METER OUT</b>	
20FCMO 0602	6mm x 1/8 90°
20FCMO 0604	6mm x 1/4 90°
20FCMO 0802	8mm x 1/8 90°
20FCMO 0804	8mm x 1/4 90°
<b>METER IN</b>	
20FCMI 0602	6mm x 1/8 90°
20FCMI 0604	6mm x 1/4 90°
20FCMI 0802	8mm x 1/8 90°
20FCMI 0804	8mm x 1/4 90°
<b>IN LINE</b>	
20FCIL 04	4mm
20FCIL 06	6mm
20FCIL 08	8mm
20FCIL 10	10mm
20FCIL 12	12mm

Other types and sizes available on request

## FEMALE BSP FLOW CONTROL



PART No	BSP
20FCIL02BSP	1/8
20FCIL04BSP	1/4
20FCIL08BSP	1/2

## CLIPPARD PNEUMATIC TOGGLE VALVES

*Clippard*

### 3-WAY, 2 POSITION POPPET VALVE



PART No	PORT
20MJTV-3	1/8 NPT

### 4-WAY, 2 POSITION TOGGLE VALVE



PART No	PORT
20MJTV-5	1/8 NPT

### 3-POSITION TOGGLE VALVE



PART No	PORT
20TV-4DP Dented	1/8 NPT
20TV-4MP Momentary	1/8 NPT

**FULL RANGE OF CLIPPARD  
VALVES AVAILABLE**

## BIMBA PNEUMATIC TOGGLE VALVES

Made in the USA

### 3-PORT, 2 POSITION TOGGLE VALVE

PART No	PORT
20S09-1704 Detented	1/8 NPT



### 5-PORT, 3 POSITION TOGGLE VALVE

PART No	PORT
20C042501-HD Detented	1/8 NPT

**FULL RANGE OF BIMBA  
VALVES AVAILABLE**

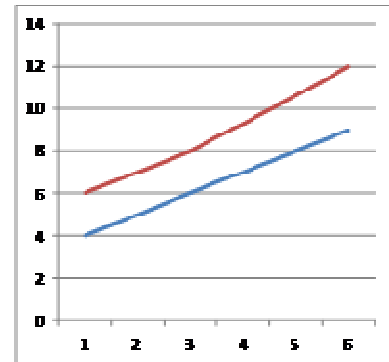
## PRESSURE SWITCHES

### NEMA TYPE PRESSURE SWITCHES

1/4" BSP Thread  
 Voltage: 220V  
 Max Current: 16 Amps  
 Cut in Pressure: 6 Bar (Adjustable from 4-9 Bar  
 Cut out Pressure: 8 Bar (See chart below for cut out pressure if cut in pressure has been adjusted)  
 Control Accuracy:  $\pm 0.03$  Bar  
 Working Temperature: -25°C to +40°C



PART No	DESCRIPTION
04AD1-B	Single Port With 1/4 Brass Connection
04AD4-B	4-Port 1/4 With Brass Connection
04AD1-P	Single Port With 6mm Plastic Push-fit Connection
04AD4-P	4-Port With 6mm Plastic Push-fit Connection

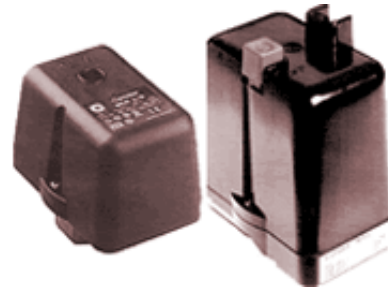


Top line: Cut out Pressure  
 Bottom Line: Cut in Pressure

### CONDOR PRESSURE SWITCHES

#### MDR2 Single Phase

Max cut out Pressure 12bar  
 Switching capacity 2.2 KW  
 20 Amps at 240 Volts



PART No	PRESSURE RANGE	CONNECTION	No of PORTS
04-MDR2-1	400-1200kpa	1/4bsp Female	1
04-MDR2P-1	400-1200kpa	Plastic	1
04-MDR2-4	400-1200kpa	1/4bsp Female	4
04-MDR2P-4	400-1200kpa	Plastic	4

#### MDR3 3-Phase

Max cut out Pressure 35bar

PART No	PRESSURE RANGE	CONNECTION	THERMAL OVERLOAD
04-MDR3-10	1100kpa	1/4bsp Female	6.3 - 10 Amps
04-MDR3-16	1100kpa	1/4bsp Female	10 - 16 Amps
04-MDR3-20	1100kpa	1/4bsp Female	16 - 20 Amps



**OTHER TYPES PLUS A FULL RANGE OF SPARES AVAILABLE**