



## PCL MK4 TYRE INFLATOR



Made in Sheffield, England, the PCL Mk4 Tyre Inflator is the benchmark upon which all other tyre inflators are compared to.

- Durable, yet lightweight design (923g)
- New design viewing window gives a 20% increase in field of view
- Tested to over 400,000 cycles at 100% accuracy
- Meets European Standards EC 86/217. Compliant with EN 12645:2014

Each inflator is individually factory tested and comes with a calibration certificate.



Inflation Pressure : 0 - 138psi (960kpa)  
 Max Inlet Pressure: 200psi (1380kpa)  
 Inflation Flow Rate: 18cfm (500 l/min)

**PART No**

10TIMK4

Replacement non-sealing hold on chucks also available.

**Part No: 10TC-CO1A03**

## AUTO SERIES INFLATOR and CHUCKS

These Auto tyre chucks and tyre inflator incorporate a new design in connecting the chuck to the tyre valve. Simply push the chuck onto the tyre valve and it will lock on, first time, every time. No cumbersome locking levers required. It is a simple one handed operation.

To remove the chuck, just push on the release button. Much easier to use than the traditional lever style tyre chucks.

### 10TI6003 3 in 1 AUTO TYRE INFLATOR



- Non sealing tyre inflator
- 3 in 1 Gauge (PSI, Bar and Kpa)
- Max pressure 160psi (1100Kpa)
- Depress trigger half way to deflate
- 1/4bsp port
- Incorporates the new clip on Auto tyre chuck

**PART No**

10TI6003

### 10TC307 AUTO CLIP ON CHUCK STRAIGHT - Non Sealing



- Non sealing tyre chuck
- 1/4bsp female port

**PART No: 10TC307**

### 10TC308 AUTO CLIP ON CHUCK 90 DEGREE - Non Sealing



- Non sealing tyre chuck
- 90 Degree Swivel
- 1/4bsp female port

**PART No: 10TC308**

**TI201D DIGITAL TYRE INFLATOR**



Non Sealing Tyre Inflator  
 Digital gauge measuring kpa, bar and psi  
 Max Pressure 220psi - 1500kpa

**PART No: 10TI201D**

**TC306 LARGE BORE CLIP ON CHUCK –Non Sealing**

For use on earthmoving equipment



PART No	DESCRIPTION
10TC306	Large Bore Clip on Chuck - Non Sealing



**TC3031 1/4 BARB CLIP ON CHUCK -Sealing**



PART No	DESCRIPTION
10TC3031	1/4 Barb Clip on Chuck - Sealing

**TC305 1/4 FEMALE CLIP ON CHUCK -Sealing**



PART No	DESCRIPTION
10TC305	1/4 Female clip on chuck - Sealing

**TC305NS 1/4 FEMALE CLIP ON CHUCK –Non Sealing**



PART No	DESCRIPTION
10TC305NS	1/4 Female clip on chuck - Non-Sealing

**TC304 HOLD ON CHUCK - Sealing**



PART No	DESCRIPTION
10TC304	Dual Hold On Chuck - Sealing

**TC302 PREMIUM DUAL HOLD ON CHUCK - Sealing**



PART No	DESCRIPTION
10TC302	Premium Dual Hold On Chuck – Sealing
10TC302NS	Premium Dual Hold On Chuck – Non Sealing

**TC303 PREMIUM DUAL CLIP ON CHUCK - Sealing**



PART No	DESCRIPTION
10TC303	Premium Dual <u>Clip On</u> Chuck - Sealing

**SCHRADER VALVE**



PART No	DESCRIPTION
10SCHRADER	1/8bsp Short Tank Valve

**TC300 SINGLE HOLD ON CHUCK -Sealing**



PART No	DESCRIPTION
10TC300	Single Hold on Chuck - Sealing

**AIR COUPLING ADAPTOR TO FEMALE SCHRADER VALVE THREAD**



Ryco Style



Nitto Style

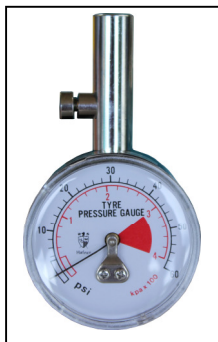
**TC301 SINGLE CLIP ON CHUCK -Sealing**



PART No	DESCRIPTION
10TC301	Single Clip on Chuck –Sealing

PART No	DESCRIPTION
10SCH-RYCO	Ryco Male to Female Schrader Thread
10SCH-NITTO	Nitto Male to Female Schrader Thread

## TYRE GAUGE WITH STRAIGHT CHUCK



50mm Face  
0-60psi Pressure Range  
Housing: Chrome plated Steel  
Stem with release button  
and straight chuck

**PART No: 10TG-012**

## TYRE GAUGE WITH ANGLE CHUCK



50mm Face  
0-60psi Pressure Range  
Housing: Chrome plated Steel  
Stem with release button  
and angle chuck

**PART No: 10TG-032**

## TRUCK TYRE GAUGE



50mm Face  
0-160psi Pressure Range  
Housing: Chrome plated Steel  
Stem incorporates a release button  
NBR Braided Hose  
Extension Bar with Dual Chuck

**PART No 10TG-041**

## PCL PENCIL GAUGE

Pocket tyre pressure gauge with an angled head designed to fit on the tyre at 90°. Incorporates a self adjusting friction device which enables the pressure to be read once the gauge is removed from the tyre valve.  
Supplied in a durable protective case.  
Pressure Range: 6 - 50psi.

**PART No: 10TGP-17**



## PCL PENCIL GAUGE and TYRE THREAD DEPTH GAUGE KIT

PCL pocket tyre gauge plus tyre depth gauge. Able to measure tread 1-26mm

**PART No: 10TGK-15**



## SPIDER HOSES

### TYRE INFLATION HOSE FOR TRUCKS

- Available in 4 legs or 6 legs
- Each hose is 2m in length
- Angle and straight chucks supplied
- 1000kpa (145psi) gauge
- The gauges comes with a rubber protective shroud. This will protect the gauge against accidental damage.

PART No	DESCRIPTION
13-SPIDER4-S	4 Arm Spider c/w Schroud
13-SPIDER6-S	6 Arm Spider c/w Schroud

