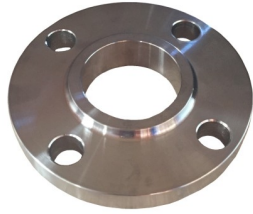


**SLIP ON WELD FLANGE
- ANSI 150**



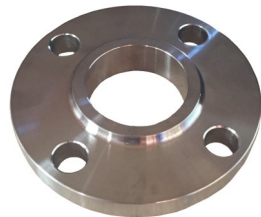
PART No	SIZE
31SSF015-A150	1/2
31SSF020-A150	3/4
31SSF025-A150	1
31SSF032-A150	1.1/4
31SSF040-A150	1.1/2
31SSF050-A150	2
31SSF065-A150	2.1/2
31SSF080-A150	3
31SSF100-A150	4
31SSF150-A150	6
31SSF200-A150	8

**SLIP ON WELD FLANGE
- DIN PN16**



PART No	SIZE
31SSF025-DIN16	1
31SSF032-DIN16	1.1/4
31SSF040-DIN16	1.1/2
31SSF050-DIN16	2
31SSF065-DIN16	2.1/2
31SSF080-DIN16	3
31SSF100-DIN16	4
31SSF150-DIN16	6

**SLIP ON WELD FLANGE
- ANSI 300**



PART No	SIZE
31SSF040-A300	1.1/2
31SSF050-A300	2
31SSF065-A300	2.1/2
31SSF080-A300	3
31SSF100-A300	4

**SLIP ON WELD FLANGE
- TABLE H**



PART No	SIZE
31SSF040-H	1.1/2
31SSF050-H	2
31SSF065-H	2.1/2
31SSF080-H	3
31SSF100-H	4

**SLIP ON WELD FLANGE
- TABLE E**



PART No	SIZE
31SSF025-E	1
31SSF032-E	1.1/4
31SSF040-E	1.1/2
31SSF050-E	2
31SSF065-E	2.1/2
31SSF080-E	3
31SSF100-E	4
31SSF150-E	6
31SSF200-E	8
31SSF250-E	10

**BSP SCREWED FLANGE
- TABLE E**



PART No	SIZE
31SSF025S-E	1
31SSF032S-E	1.1/4
31SSF040S-E	1.1/2
31SSF050S-E	2
31SSF065S-E	2.1/2
31SSF080S-E	3
31SSF100S-E	4

**SLIP ON WELD FLANGE
- TABLE D**



PART No	SIZE
31SSF080-D	3
31SSF100-D	4
31SSF150-D	6
31SSF200-D	8
31SSF250-D	10

**BSP SCREWED FLANGE
- TABLE D**



PART No	SIZE
31SSF100S-D	4

**BSP SCREWED FLANGE
- ANSI 150**



PART No	SIZE
31SSF015S-A150	1/2
31SSF020S-A150	3/4
31SSF025S-A150	1
31SSF040S-A150	1.1/2
31SSF050S-A150	2
31SSF065S-A150	2.1/2
31SSF080S-A150	3
31SSF100S-A150	4

**BLIND FLANGE
- TABLE D**



PART No	SIZE
31SSF100B-D	4
31SSF150B-D	6
31SSF200B-D	8
31SSF250B-D	10

**BSP SCREWED FLANGE
- DIN PN16**



PART No	SIZE
31SSF025S-DIN16	1
31SSF032S-DIN16	1.1/4
31SSF040S-DIN16	1.1/2
31SSF050S-DIN16	2
31SSF065S-DIN16	2.1/2
31SSF080S-DIN16	3

TUBE O.D. SLIP ON WELD FLANGES



- ANSI 150

PART No	SIZE
31SSTF025-A150	1
31SSTF040-A150	1.1/2
31SSTF050-A150	2
31SSTF065-A150	2.1/2
31SSTF080-A150	3
31SSTF100-A150	4
31SSTF150-A150	6

- TABLE E

PART No	SIZE
31SSTF025-E	1
31SSTF032-E	1.1/4
31SSTF040-E	1.1/2
31SSTF050-E	2
31SSTF065-E	2.1/2
31SSTF080-E	3
31SSTF100-E	4
31SSTF150-E	6

- TABLE D

PART No	SIZE
31SSTF100-D	4
31SSTF150-D	6
31SSTF200-D	8

- DIN PN16

PART No	SIZE
31SSTF025-DIN16	1
31SSTF032-DIN16	1.1/4
31SSTF040-DIN16	1.1/2
31SSTF050-DIN16	2
31SSTF065-DIN16	2.1/2
31SSTF080-DIN16	3
31SSTF100-DIN16	4

**BLIND FLANGE
- ANSI 150**



PART No	SIZE
31SSF015B-A150	1/2
31SSF020B-A150	3/4
31SSF025B-A150	1
31SSF032B-A150	1.1/4
31SSF040B-A150	1.1/2
31SSF050B-A150	2
31SSF065B-A150	2.1/2
31SSF080B-A150	3
31SSF100B-A150	4
31SSF150B-A150	6

**BLIND FLANGE
- TABLE E**



PART No	SIZE
31SSF025B-E	1
31SSF032B-E	1.1/4
31SSF040B-E	1.1/2
31SSF050B-E	2
31SSF065B-E	2.1/2
31SSF080B-E	3
31SSF100B-E	4
31SSF125B-E	5
31SSF150B-E	6

RUBBER FLANGE GASKET

Thickness 3mm

CATEGORY 60



PART No	SIZE	TABLE	PART No	SIZE	TABLE
60FG-08	1/2	Table D/E	60FG-40	2.1/2	Table D/E
60FG-12	3/4	Table D/E	60FG-48	3	Table D/E
60FG-16	1	Table D/E	60FG-64	4	Table D
60FG-20	1.1/4	Table D/E	60FG-96	6	Table D
60FG-24	1.1/2	Table D/E	60FGE-64	4	Table E
60FG-32	2	Table D/E	60FGE-96	6	Table E
			60FGE-128	8	Table E