

No 24 REDUCING BUSH



PART No	MALE		FEM
0124-0402	1/4	x	1/8
0124-0602	3/8	x	1/8
0124-0604	3/8	x	1/4
0124-0802	1/2	x	1/8
0124-0804	1/2	x	1/4
0124-0806	1/2	x	3/8
0124-1202	3/4	x	1/8
0124-1204	3/4	x	1/4
0124-1206	3/4	x	3/8
0124-1208	3/4	x	1/2
0124-1604	1	x	1/4
0124-1606	1	x	3/8
0124-1608	1	x	1/2
0124-1612	1	x	3/4

No 27 HEXAGON NIPPLE



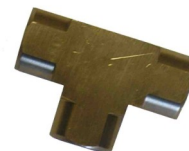
PART No	BSP
0127-02	1/8
0127-04	1/4
0127-06	3/8
0127-08	1/2
0127-12	3/4
0127-16	1

No 34 45deg F/F ELBOW



PART No	BSP
013445-02	1/8
013445-04	1/4
013445-06	3/8

No 35 FEMALE TEE



PART No	BSP
0135-02	1/8
0135-04	1/4
0135-06	3/8
0135-08	1/2
0135-12	3/4

For Larger Tees Refer to Plumbing Section Pg14-15

No 25 M/F COMPACT ELBOW

(Reduced Bore)



PART No	MALE		FEM
0125-02	1/8	x	1/8
0125-04	1/4	x	1/4
0125-06	3/8	x	3/8
0125-08	1/2	x	1/2
0125R-0402	1/4	x	1/8
0125R-0204	1/8	x	1/4
0125R-0406	1/4	x	3/8

For Larger Elbows Refer to Plumbing Section Pg14-15

No 28 LONG HEX NIPPLE



PART No	BSP		LGTH
0128-0224	1/8	x	1.1/2
0128-0232	1/8	x	2
0128-0424	1/4	x	1.1/2
0128-0432	1/4	x	2
0128-0448	1/4	x	3
0128-0632	3/8	x	2
0128-0648	3/8	x	3

No 29 REDUCING SOCKET



PART No	BSP		BSP
0129-0402	1/4	x	1/8
0129-0602	3/8	x	1/8
0129-0604	3/8	x	1/4
0129-0802	1/2	x	1/8
0129-0804	1/2	x	1/4
0129-0806	1/2	x	3/8
0129-1204	3/4	x	1/4
0129-1206	3/4	x	3/8

No 25E M/F EXTENDED ELBOW

(Full Bore)



PART No	MALE		FEM
0125E-02	1/8	x	1/8
0125E-04	1/4	x	1/4
0125E-06	3/8	x	3/8
0125E-08	1/2	x	1/2
0125E-12	3/4	x	3/4

No 33 CAP



PART No	BSP
0133-02	1/8
0133-04	1/4
0133-06	3/8

For Larger Caps Refer to Plumbing Section Pg14-15

No 25E 45deg M/F ELBOW



PART No	MALE		FEM
012545-02	1/8	x	1/8
012545-04	1/4	x	1/4
012545-06	3/8	x	3/8
012545-08	1/2	x	1/2
012545-12	3/4	x	3/4

No 34 F/F ELBOW



PART No	BSP
0134-02	1/8
0134-04	1/4
0134-06	3/8
0134-08	1/2

For Larger Elbows Refer to Plumbing Section Pg14-15

No 26 HEXAGON SOCKET



PART No	BSP
0126-02	1/8
0126-04	1/4
0126-06	3/8
0126-08	1/2
0126-12	3/4
0126-16	1

No 35B MALE BRANCH TEE



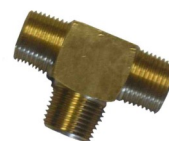
PART No	BSP
0135B-02	1/8
0135B-04	1/4
0135B-06	3/8
0135B-08	1/2

No 35R MALE RUN TEE



PART No	BSP
0135R-02	1/8
0135R-04	1/4
0135R-06	3/8
0135R-08	1/2

No 35M MALE TEE



PART No	BSP
0135M-02	1/8
0135M-04	1/4
0135M-06	3/8
0135M-08	1/2

No 37 FEMALE CROSS



PART No	BSP
0137-02	1/8
0137-04	1/4
0137-06	3/8
0137-08	1/2



Did you know that we manufacture the majority of our brass fittings in our Brisbane and Sydney factories?

No 48 MALE ELBOW



PART No	BSP		BSP
0148-02	1/8	x	1/8
0148-04	1/4	x	1/4
0148-06	3/8	x	3/8
0148-08	1/2	x	1/2
0148-0402	1/4	x	1/8
0148-0604	3/8	x	1/4

No.64 TAPER PLUG



PART No	BSP
—	1/8
0164-04	1/4
0164-06	3/8
0164-08	1/2
0164-12	3/4
0164-16	1

No 64S SOLID TAPER PLUG



PART No	BSP
0164S-02	1/8
0164S-04	1/4
0164S-06	3/8
0164S-08	1/2
0164S-12	3/4
0164S-16	1

No 64SH SOCKET HEAD PLUG

(Tapered thread)



PART No	BSP
0164SH-02	1/8
0164SH-04	1/4
0164SH-06	3/8
0164SH-08	1/2
0164SH-12	3/4

No 64P PARALLEL PLUG



PART No	BSPP
0164P-02	1/8
0164P-04	1/4
0164P-06	3/8
0164P-08	1/2

No 71 TANK COLLAR



PART No	BSP		BOSS
0171-0208	1/8	x	1/2
0171-0410	1/4	x	5/8
0171-0614	3/8	x	7/8
0171-0816	1/2	x	1

No 72 M/F ADAPTOR



PART No	FEM		MALE
0172-0202	1/8	x	1/8
0172-020224	1/8 x 1/8	x	1-1/2 long
0172-0402	1/4	x	1/8
0172-0404	1/4	x	1/4
0172-040424	1/4 x 1/4	x	1-1/2 long
0172-0602	3/8	x	1/8
0172-0604	3/8	x	1/4
0172-0606	3/8	x	3/8
0172-0804	1/2	x	1/4
0172-0806	1/2	x	3/8
0172-0808	1/2	x	1/2
0172-1204	3/4	x	1/4
0172-1206	3/4	x	3/8
0172-1208	3/4	x	1/2
0172-1212	3/4	x	3/4
0172-1612	1	x	3/4

For Larger Sizes Refer Plumbing Section Pg14-15

No 73 REDUCING NIPPLE



PART No	BSP		BSP
0173-0402	1/4	x	1/8
0173-0602	3/8	x	1/8
0173-0604	3/8	x	1/4
0173-0802	1/2	x	1/8
0173-0804	1/2	x	1/4
0173-0806	1/2	x	3/8
0173-1204	3/4	x	1/4
0173-1206	3/4	x	3/8
0173-1208	3/4	x	1/2
0173-1608	1	x	1/2
0173-1612	1	x	3/4

No 74 BSP LOCK NUT



PART No	BSP
0174-02	1/8
0174-04	1/4
0174-06	3/8

For Larger Sizes Refer Plumbing Section Pg14-15

No 75 FEMALE Y-PIECE
(Nickel Plated)



PART No	BSP
0175-02	1/8
0175-04	1/4
0175-06	3/8
0175-08	1/2

No 75MF M/F Y-PIECE
(Nickel Plated)



PART No	BSP
0175MF-02	1/8
0175MF-04	1/4
0175MF-06	3/8
0175MF-08	1/2

No 76 BREATHER VENT



PART No	BSP
0176-02	1/8
0176-04	1/4
0176-06	3/8

No 80 FEMALE BULKHEAD



PART No	FEM BSP
0180-02	1/8
0180-04	1/4
0180-06	3/8
0180-08	1/2

No 80NP FEMALE BULKHEAD
(Nickel Plated)



PART No	FEM BSP
0180NP-02	1/8
0180NP-04	1/4
0180NP-06	3/8
0180NP-08	1/2

No 81 MALE FEMALE PORT REDUCER

Compact Reducer for Female Threads
(Nickel Plated)



PART No	MALE		FEM
0181-0402	1/4	x	1/8
0181-0604	3/8	x	1/4
0181-0806	1/2	x	3/8
0181-1208	3/4	x	1/2
0181-1612	1	x	3/4

Do you require a thread sealant?
We stock various types of thread tape plus a comprehensive range of BONDLOC thread sealants and lockers.
See pages 31-35 for more information.



No 24 NPT REDUCING BUSH



PART No	MALE	FEM
02N24-0402	1/4 x	1/8
02N24-0602	3/8 x	1/8
02N24-0604	3/8 x	1/4
02N24-0802	1/2 x	1/8
02N24-0804	1/2 x	1/4
02N24-0806	1/2 x	3/8
02N24-1204	3/4 x	1/4
02N24-1206	3/4 x	3/8
02N24-1208	3/4 x	1/2
02N24-1608	1 x	1/2
02N24-1612	1 x	3/4

No 27 NPT HEX NIPPLE



PART No	NPT
02N27-02	1/8
02N27-04	1/4
02N27-06	3/8
02N27-08	1/2
02N27-12	3/4
02N27-16	1

No 37 NPT CROSS



PART No	NPT
02N37-02	1/8
02N37-04	1/4
02N37-06	3/8
02N37-08	1/2

No 25 NPT M/F ELBOW

(Reduced Bore)



PART No	MALE	FEM
02N25-02	1/8 x	1/8
02N25-04	1/4 x	1/4
02N25-06	3/8 x	3/8
02N25-08	1/2 x	1/2
02N25R-0402	1/4 x	1/8

No 29 REDUCING SOCKET NPT



PART No	NPT	NPT
02N29-0402	1/4 x	1/8
02N29-0602	3/8 x	1/8
02N29-0604	3/8 x	1/4
02N29-0806	1/2 x	3/8

No 64 NPT PLUG



PART No	NPT
02N64-02	1/8
02N64-04	1/4
02N64-06	3/8
02N64-08	1/2
02N64-12	3/4

No 25E NPT M/F EXTENDED ELBOW

(Full Bore)



PART No	MALE	FEM
02N25E-02	1/8 x	1/8
02N25E-04	1/4 x	1/4
02N25E-06	3/8 x	3/8
02N25E-08	1/2 x	1/2
02N25E-12	3/4 x	3/4

No 34 NPT F/F ELBOW



PART No	NPT
02N34-02	1/8
02N34-04	1/4
02N34-06	3/8
02N34-08	1/2

No 64SH NPT SOCKET HEAD PLUG



PART No	NPT
02N64SH-02	1/8
02N64SH-04	1/4
02N64SH-06	3/8
02N64SH-08	1/2
02N64SH-12	3/4

No 35 NPT FEMALE TEE



PART No	NPT
02N35-02	1/8
02N35-04	1/4
02N35-06	3/8
02N35-08	1/2

No 72 NPT M/F ADAPTOR



PART No	FEM	MALE
02N72-0202	1/8 x	1/8
02N72-0402	1/4 x	1/8
02N72-0404	1/4 x	1/4
02N72-0604	3/8 x	1/4
02N72-0606	3/8 x	3/8
02N72-0804	1/2 x	1/4
02N72-0806	1/2 x	3/8
02N72-0808	1/2 x	1/2
02N72-1206	3/4 x	3/8
02N72-1208	3/4 x	1/2

No 25 NPT 45deg M/F ELBOW



PART No	NPT
02N2545-02	1/8
02N2545-04	1/4
02N2545-06	3/8
02N2545-08	1/2
02N2545-12	3/4

No 35MBT NPT MALE BRANCH TEE



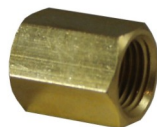
PART No	NPT
02N35B-02	1/8
02N35B-04	1/4
02N35B-06	3/8
02N35B-08	1/2

No 73 NPT REDUCING NIPPLE



PART No	NPT	NPT
02N73-0402	1/4 x	1/8
02N73-0602	3/8 x	1/8
02N73-0604	3/8 x	1/4
02N73-0804	1/2 x	1/4
02N73-0806	1/2 x	3/8
02N73-1208	3/4 x	1/2

No 26 NPT SOCKET



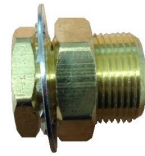
PART No	NPT
02N26-02	1/8
02N26-04	1/4
02N26-06	3/8
02N26-08	1/2
02N26-12	3/4

No 35MRT NPT MALE RUN TEE



PART No	NPT
02N35R-02	1/8
02N35R-04	1/4
02N35R-06	3/8
02N35R-08	1/2

No 80 NPT FEMALE BULKHEAD



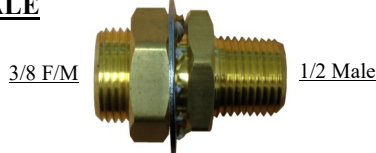
PART No	INSIDE THREAD		OUTSIDE THREAD
02N80-04	1/4 NPT	x	3/4-16UNF
02N80-06	3/8 NPT	x	1-14UNF
02N80-08	1/2 NPT	x	9/8-14UNF
02N80-0804	1/4 NPT	x	1/2 NPT

No P3 NPT MALE HOSETAIL



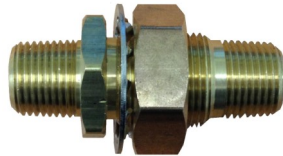
PART No	HOSE		NPT
02NP03-0302	3/16	x	1/8
02NP03-0304	3/16	x	1/4
02NP03-0402	1/4	x	1/8
02NP03-0404	1/4	x	1/4
02NP03-0406	1/4	x	3/8
02NP03-0502	5/16	x	1/8
02NP03-0504	5/16	x	1/4
02NP03-0506	5/16	x	3/8
02NP03-0602	3/8	x	1/8
02NP03-0604	3/8	x	1/4
02NP03-0606	3/8	x	3/8
02NP03-0608	3/8	x	1/2
02NP03-0804	1/2	x	1/4
02NP03-0806	1/2	x	3/8
02NP03-0808	1/2	x	1/2
02NP03-0812	1/2	x	3/4
02NP03-1006	5/8	x	3/8
02NP03-1008	5/8	x	1/2
02NP03-1208	3/4	x	1/2
02NP03-1212	3/4	x	3/4
02NP03-1612	1	x	3/4
02NP03-1616	1	x	1

No 80MF MALE x FEMALE BULKHEAD NPT



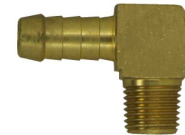
PART No	INSIDE THREAD	OUTSIDE THREAD
02N80MF-0806	3/8 NPT	1/2NPT

1/2 Male x 1/2 Male x 1/4 Female



PART No	INSIDE THREAD	OUTSIDE THREAD
02N80MF-080804	1/4 NPT	1/2 NPT

No P6 NPT MALE HOSE ELBOW



PART No	HOSE		NPT
02NP06-0402	1/4	x	1/8
02NP06-0404	1/4	x	1/4
02NP06-0502	5/16	x	1/8
02NP06-0504	5/16	x	1/4
02NP06-0602	3/8	x	1/8
02NP06-0604	3/8	x	1/4
02NP06-0606	3/8	x	3/8
02NP06-0804	1/2	x	1/4
02NP06-0806	1/2	x	3/8
02NP06-1006	5/8	x	3/8

No P10 NPT FEMALE HOSETAIL



PART No	HOSE		NPT
02NP10-0504	5/16	x	1/4
02NP10-0604	3/8	x	1/4
02NP10-0606	3/8	x	3/8

BRASS PUSH-ON HOSE FITTINGS

PUSH ON MALE ADAPTOR



PART No	HOSE		NPT
02PO-30404	1/4	x	1/4
02PO-30604	3/8	x	1/4
02PO-30606	3/8	x	3/8
02PO-30804	1/2	x	1/4
02PO-30806	1/2	x	3/8
02PO-30808	1/2	x	1/2
02PO-31008	5/8	x	1/2
02PO-31212	3/4	x	3/4

PUSH ON FEMALE SWIVEL SAE/JIC



PART No	HOSE		SAE/JIC
02PO-50404	1/4	x	7/16
02PO-50606	3/8	x	5/8
02PO-50808	1/2	x	3/4
02PO-51010	5/8	x	7/8
02PO-51212	3/4	x	1.1/16 (JIC)

PUSH ON HOSE JOINER



PART No	HOSE
02PO-704	1/4
02PO-706	3/8
02PO-708	1/2